

leedsparksfund.org



Leeds
Parks
Fund

Helping our city flourish



leedsparksfund.org



Partners



Aims of fund

To improve publicly accessible parks and green spaces in the city boundaries of Leeds

‘Improvements’ defined by Green Flag criteria.

Priorities:

- To fulfil the aspiration for all 63 community parks in Leeds to meet the Green Flag criteria.
- To ‘improve the quality of life for Leeds residents, particularly for those who are vulnerable or in poverty’ and ‘to create a city of opportunity for all’.

Not a substitute for local authority funding - should add value.



Why people might donate

Individuals:

- To give something back to a park or green space that means a lot to them (through a legacy)
- As a memorial
- To improve their local area
- To contribute to a project they are keen to see happen

Private Companies:

- Philanthropy
- To improve local area for staff
- To demonstrate corporate social responsibility
- Building partnerships with public/third/community sector



leedsparksfund.org

Rethinking Parks

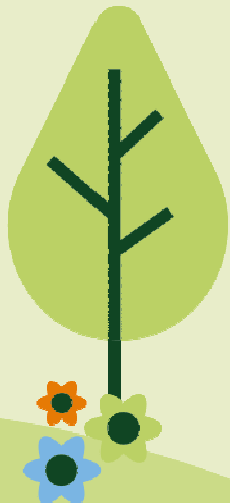


Lottery funding of £171k over 2 years

Project aims to investigate the potential of charitable giving to parks

The project will involve:

- Research
- Developing and implementing fundraising and marketing plans
- Engaging communities
- Trialling new ways to donate
- Making a difference on the ground
- Sharing learning nationally



leedsparksfund.org



Thank-you for supporting Leeds parks

#LoveLeedsParks

